

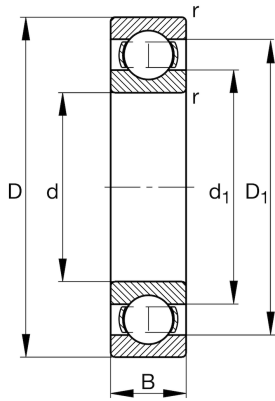
FAG

16010-A

Deep groove ball bearing

Schaeffler ID:
0686821230000Deep groove ball bearing 160..-A, single
row, steel sheet metal cage

Technical information

**Dimensions**

r_{\min}	0.6 mm	Minimum chamfer dimension
D_1	72.1 mm	Shoulder diameter outer ring
d_1	61.9 mm	Shoulder diameter inner ring
	0.175 kg	Weight

Main Dimensions & Performance Data

d	50 mm	Bore diameter
D	80 mm	Outside diameter
B	10 mm	Width
C_r	15,990 N	Basic dynamic load rating, radial
C_{0r}	13,230 N	Basic static load rating, radial
C_{ur}	760 N	Fatigue load limit, radial
n_G	12,200 1/min	Limiting speed
n_{gr}	6,300 1/min	Reference speed

Mounting dimensions

$d_{a\min}$	53.2 mm	Minimum diameter shaft shoulder
$D_{a\max}$	76.8 mm	Maximum diameter of housing shoulder
$r_{a\max}$	0.6 mm	Maximum fillet radius

Calculation factors

f_0	16.2	Calculation factor
-------	------	--------------------

Temperature range

T_{\min}	-30 °C	Operating temperature min.
T_{\max}	120 °C	Operating temperature max.